

CMH EMS Newsletter

Notes from Neal

In This Issue

CMH EMS JANUARY EDITION

Pg 1	Notes from Neal
Pg 2	Cedar Co News- Tom R.
Pg 3	Hickory Co News- Alice
Pg 4	Polk Co News—Aaron
Pg 5	Notes from Neal (con't)
Pg 6	Birthdays/Anniversaries
Pg 6	Schedule, CMH Education Classes
Pg 7	Health & Safety Updates
Pg 8	Cedar Co Building Progress
Pg 9	STEMI for Nov & Dec
Pg 10	EMT Refresher
Pg 11	Paramedic Refresher
Pg 12	EMS Education—Spring 2018
Pg 13	Organizational Chart



Jan 2018 Volume: 4 Issue: 5

We are one of the best EMS services in our area. We have an engaged Medical Director. I will put our protocols up against anyone's. Our EMTs and Paramedics deliver exceptional care. You are empowered to be compassionate and do what is right for the patient. Our exceptional care and expectation of being compassionate set us apart. As we move into the New Year, I want all of us to acknowledge that we are one of the best services in our area.

We have a lot to accomplish to move forward to be even better. It is challenging and we all have all ownership in what we do. We are a rural EMS service that covers a lot of ground.

2,265 Square miles and a population of 63,900

That in itself and a challenge. We are the link to Emergency Medical care on our area. We also have to keep in mind that part of our service has the lowest per capita income and lowest tax bases in the state. I am up to that challenge and I expect you to be, too. We will continue to work together to keep us moving forward.

Our Mission:

To provide safe, exceptional and compassionate care to our communities with an emphasis on highly trained and empowered EMS staff.

Con't pg 5

Happy
New
Year



Life and Times from the Beautiful Stockton Lake

As we say goodbye to another year, we ask ourselves “Were did the year go?” I just wanted to take a moment and say THANK YOU for a great year! I hope and pray that 2018 is a good year for you and your loved ones.

Thumbs Up: Robert Hutson & Bruce Fugate

A family stopped by the station with a basket of treats to show their appreciation for the care you both rendered to their son who was involved in an accident near the Caplinger Mills area. They wanted to let everyone know of the boy’s prognosis; he received a titanium rod in his leg that is healing well. Afterwards, it will be physical therapy, and onto what awaits. They expect a good recovery! Just wanted to take a moment and say *Great Job guys*, and thanks for all you did. It’s nice to hear that we did something good and get good feedback from our patients and their family.

Board Notes:

Cedar County Ambulance District board met on December 18th in Stockton. A few items they went over were the purchase of two additional suction pumps for El Dorado station to get away from the old style that uses the old Lifepack batteries. Also, we received the replacement Garmin for 711. Items still awaiting approval: The new ice machine and furniture for El Dorado station.

Life and Times from the Beautiful Stockton Lake con’t

New Building update:

Speaking of the new station, the project has started and coming along very nicely if I would say so myself. Every day you can see more and more progress. They about have it all closed in. The Ambulance Board is picking out colors for the floor and walls this week, and will be ordering the kitchen appliances and furniture as well as bedrooms setup shortly. Photos can be seen on page 7 of this newsletter!

Personnel:

*(Posting Full Time Medic opening in Cedar County at **Eldorado Springs** station, if you are interested contact Tom Ryan by midnight on 01/02/18)*

Richard Kowal has accepted a position as Director of Education for Reynolds County and will be unable to continue to work for CMH EMS. His last day with us was December 23rd. We want to congratulate Richard on his new adventure. With that said, we are opening his position up in **El Dorado Springs**, for your consideration. If you are interested in working in this mild mannered, kicked back station (?) that has the latest up to date equipment and power load system, then please contact Tom Ryan, Cedar County Operations Mgr. I will close this position **on 01/02/2018** at midnight, and schedule peer interviews within the following 2 weeks of this date.

Happy & Safe New Year
Tom Ryan Ops Mgr
Cedar Co.



Hickory & St. Clair Counties — Alice Roberts

HAPPY NEW YEAR! GOOD BYE 2017 AND WELCOME 2018!

2018 will bring the first Paramedic class to CMH. We will have 3 EMT's from Osceola and Hickory in this class. **Emma, Cheyenne and Lucas.** With this will come a few schedule changes to accommodate their class schedule. Please make sure you review your schedule when it comes out and get your schedule in your work calendar. Please - everyone support them, keep them encouraged and moving forward. Those that are now paramedics know some of the struggles and hardships that they are about to face.

Thank you **Ryan** for being such an asset in making this happen at Osceola for Emma and Cheyenne. We all have greatly appreciated your help with the schedule.

I hope everyone has made some New Year's resolutions of some kind. Again this year, I want to continue working on the following items.

A few of these things are as follow:

1. Doing your morning truck checks.
2. Daily station duties.
3. Keeping run numbers in numerical order (November & December has been a bit of a mess).
4. Everyone needs to go through and review the new protocols. (No Exceptions).
5. Review Hospital/PHS policies.
6. Writing good, solid trip tickets.
7. Working together as one team with the same end goal in mind.

We have months where we have been slacking and these things need to become a consistent habit.

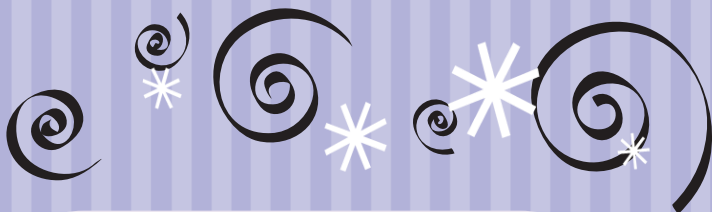
I have been reviewing alot of trip tickets. If you received a QA sheet for your trip ticket review, please look at the notes that are made and work on creating better trip tickets. I still see monitor downloads not being done as well as signatures by your patient, receiving nurse, and/or partner not being obtained, and narratives that are skimpy and hard to follow. Please paint a good overall picture of your call.

John Frazer has done a wonderful job with labeling of the supply room and I hope he will be able to help with getting the ambulances done also. We should have both of our back up trucks in their respective stations by now. We need to make sure medications that we no longer or soon to be not using are off the trucks and new ones are on the truck now.

I will be gone on vacation this month, as it is Jr and my 20th anniversary. We have had this trip planned since August. This has turned out to be a horrible time for me to be gone with the shortage of Paramedics. I am truly sorry. I am hoping that between all of you, we can cover the shifts in Hickory and Osceola among ourselves. Also, as long as we have our respective stations covered, I ask that you please help out in Polk and Stockton. Everyone is going to need some help for a while. A few extra shifts here and there helps out more then you realize. I will leave **Tom L.** in charge of Hickory and I need someone on Osceola? Any takers?

I hope you all have a wonderful and fantastic 2018! As always, be safe out there.

Alice Roberts Emt-P
Hickory-Osceola Ops. Manager



Polk Co News—Aaron Weaver

By the end of January, dispatch will be using their new CAD. Our Fleet Eyes will interact with their CAD maps. So, we will be able to be dispatched using the closest unit. Also, we will be dispatched by the longest out of service time. What does this mean? Pretty much the same as we have been dispatched to this point. The biggest change you will see will be dealing with LDTs. The truck that has sat the longest will be the next truck up. If Medic 1 is on a transfer to Kansas City and Medic 4 did a nursing home transfer an hour before Medic 1 gets back into the county, Medic 4 will be back up due to the amount of time they have been available. I would appreciate everyone to go with the flow on this new way of dispatching. Let's give it a chance to see how well this will work out in the long run.

It is Winter time! We have already seen some the dreaded snow. I want to remind everyone when driving out on this stuff to slow down and take your time. If we do not make it to the scene, we will not be any help. Remember: When driving on snow and ice, **be careful**. Our trucks are pretty heavy but that does not make us immune to the slick roads. If you start sliding, let up on the gas, do not hit your brakes, and steer into the skid or sliding. For the most part, this can be avoided by not getting into a big hurry. Also, review our LDT policy. We use NOAA and MODOT weather map to determine our approval of a long distance transfer.

Versed: We are now able to get the 5mg/ml vials instead of the 5mg/5ml. We have it in our restock box here in Polk County. By the end of this month, it will make it to our Narc boxes. The vial is smaller and it is marked different, however until all the 5mg/5ml is off the trucks, we will be marking the 5mg/ml vial with a green dot.

Con't

Polk Co News—Aaron Weaver

Versed: Keep an eye out and make sure you know which concentration you are using. I would really prefer the 5mg/5ml vials to be used first, unless we need to use intranasal versed on a seizing patient.

I am going to give another shout out to everyone for stepping up and working all the extra shifts that you have.

- 📌 **Ryan McDonald**, you continue to show your dedication working pretty much every night. Thank you very much.
- 📌 **John Smith**, thank you for all the extra shifts you have been picking up also.
- 📌 **Joshua Moore**, thank you for coming in at night to finish the evening up with having BLS truck on.
- 📌 **Steve Keller** has been picking up several extra shifts, thank you for doing so and thank you for coming early to help out the people who have been on long shifts.
- 📌 **Tim Shaw**, thank you for coming down from St. Clair to work a shift or two.
- 📌 **John Frazer**, You have been coming down and working several shifts as well, Thank you.
- 📌 **Goldie Masters**, thank you for working several shifts around Christmas helped out a bunch.
- 📌 **Katie Claxton**, thank you for your shifts you pick up as well.
- 📌 **Eric Childress** I forgot you, thank you for picking up several Polk county shifts lately.

I am sure I have missed a couple of people, I am sorry if I did, but thank you for everyone who is stepping in and picking up.

Aaron Weaver, Paramedic
Operations manager - Polk County
CMH EMS

Notes from Neal con't

Chart Review

As I have been doing chart reviews, I have noticed inconstant signatures in all areas of our charts. We have to have both crew members sign the ePCR. We need the person receiving the patient to sign. We must have the patient or a representative for the patient sign the consent/privacy notice. If the patient cannot sign, you must document it and back it up in your narrative. **Why:** Our signatures indicate we were on the call. The patient gave consent to treat and to bill and release information to insurance companies. Also a signature documents who received the patient at the receiving facility. Do not take signatures lightly. These signatures also are required in the billing process. Please be diligent and make sure you get all the signatures on your ePCRs.

As we move into the New Year we will be getting ready to work on budgets. It gets a little crazy making the decisions that need to be made and prioritizing our needs. Once we get our budget and capital expenditures lined out, I will share them with you.

Help us recruit Paramedics. If you know a Paramedic, ask them if they would be interested in working at CMH. Talk to them. If they are the least bit interested, get them in touch with me, Jeff or one of the operation managers. There is a \$7,500 sign on bonus. We have competitive pay. We have great protocols. We have a family atmosphere and work together. Our benefits are good and the cost for health insurance is very low and super competitive. Lots of overtime is available. Help us find Paramedics, beat the bushes.

I hope everyone had a nice time though the holidays. I know we all worked at some time. As we go into the New Year, it is a good time to hit the reset button. Reassess and move forward. Clear your head. Don't make excuses. Shut off the outside noise and be positive. Set goals and accomplish what you set out to do.

Be Safe and Happy New Year,
Neal

Schedule

- 🇺🇸 Next Schedule Feb. 17 to March 31st
- 🇺🇸 All Request off for this schedule by: February 2nd.
- 🇺🇸 All request off are to be submitted through KRONOS!
- 🇺🇸 Please check the upcoming schedule for open shifts.
- 🇺🇸 **EMT's:** We have many open shifts. C shift will be a BLS truck as well as U shift, which is a 2pm to 2am shift.
- 🇺🇸 **Paramedics:** There are several shifts open for the 7am "A" shift. If you can help, please let a manager know!!



JANUARY SERVICE ANNIVERSARIES

17 Years

Cheryl Andrew

4 Years

Missi Painter

3 Years

Chris Mumm

1 Year

Stormy Mixon

JANUARY BIRTHDAYS

John Wright 15th

Tim Bradley 31st

Cody Liccardi 31st

CMH Education Department Classes

*Contact CMH Education Services by email
or phone for registration information.*

ACLS Renewal

(0830—1700) (CPR)

Jan 5

Jan 18

Feb 28

March 15

April 27

May 11

ACLS Initial (2d)

(0830-1700)

(CPR & 103)

Feb 1 & 2

May 23 & 24

Sept 13 & 14

PALS Initial (2d)

(0830-1700)

(CPR & 103)

March 22 & 23

July 12 & 13

Nov 1 & 2

PALS Renewal

(0830—1700) (CPR)

Feb 22

March 8

April 19

May 15

June 28

July 26

PEARS (CPR)

(0830—1700)

Feb 08

Jun 7

Oct 4

Health & Safety Updates—Brice Flynn

Good new year to one and all! I hope the Holidays have been good to you. You probably worked more than you wanted to. Thank you for covering shifts. Please recruit high-quality paramedics. We need at least 5 service wide!

Some new year updates/reminders. Please fill out the Power-LOAD survey if you have not filled it out already. We have received some good feedback so far. Please stay engaged with the industry, and speak up with what you want to see in our service in the next 5 years. When you are rounded on, make your suggestions known. We want high quality equipment to keep our patient and ourselves safe. Help us make that happen with your voice and actions. So fill out the Power-LOAD survey, if you haven't already.

On a similar line of thinking is some of the new ambulance designs we are looking at. Specifically what is called a "door forward" design. If you are interested in finding out more about this, you should ask your local FTO or supervisor to show you some pictures and drawings of these ambulances. Please provide your feedback. I will update everyone with information as it becomes available when we will have some new designs that we can actually sit in.

Lastly, I have made up a Google form for tracking ambulance cleaning. It's nothing special, but it does allow our department to track cleaning. We have been needing to do this for Infection Prevention monitoring for the hospital and to give us a base line on how much time we spend on cleaning ambulances. Go about your normal business of cleaning and then document what you did on the form. You will get an email with the link.

<https://goo.gl/forms/m587AnYSJPozBJG93>

Continue to take PRIDE in your work. Take each small opportunity to make CMH EMS a better place to work.

Thanks for all you do!
Brice Flynn
NRP, I/C, AAS, BA
Health and Safety Chief



Cedar County Progress

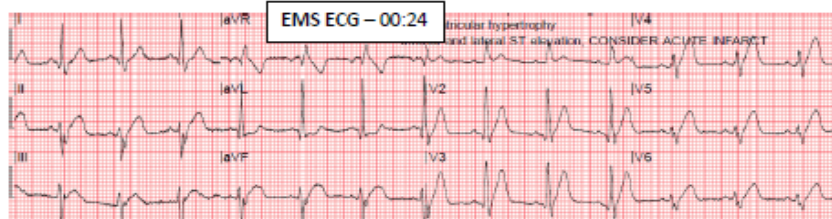


STEMI Case Report – H1121095

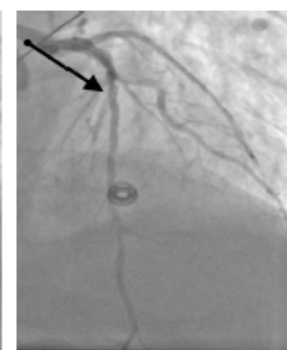
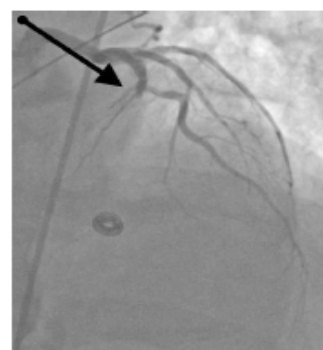
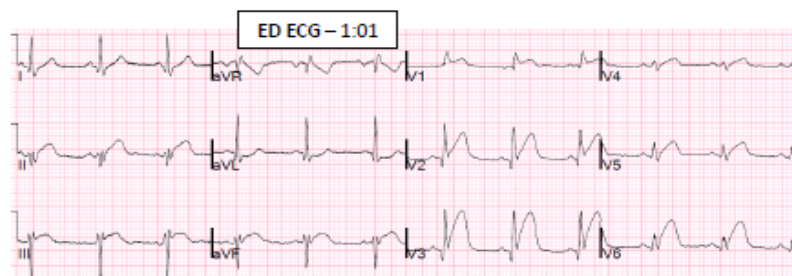
11/26/17

Patient	S/S Onset	911	FMC 2ECG	Scene Time	Transit Time	CMH Arrival	D2ECG	D2Actv	ED DIDO	CCL Time	D2B	FMC2B	Dr.	Quality Measures
48 y/o	23:55	23:56	2 min	16 min	17 min	00:55	6 min	7 min	32 min	25 min	57 min	90 min	Kardesch	100%
M	Humans ville	CMH EMS	Goal <10 min	Goal <20 min			Goal <10 min	Goal PRE-ACTV	Goal <30		Goal <90	Goal <120	Cauchi	ACC Recommendations Met

Narrative	Chief Complaint	Diagnosis	Outcome
911 called immediately upon symptom onset. EMS ECG transmission performed en route at 00:41. STEMI activation performed after ED arrival.	Sudden onset of severe chest pain waking patient from sleep, radiating into left arm associated with diaphoresis	Anterior STEMI	100% mid-LAD → DES, EF = 40-45%. Discharged home following day in stable condition. Staged intervention planned for RCA.



Quality Cardiac Care Recommendations		
ASA within 24 Hrs of Arrival	MET	324mg by EMS
ASA @ D/C	MET	81 mg
Antiplatelet @ D/C	MET	Brilinta
Beta Blocker @ D/C	MET	Metoprolol
Statin @ D/C	MET	Atorvastatin
ACE-I / ARB for LVSD @ D/C	MET	EF = 40-45% - Lisinopril
LV Evaluation @ D/C	MET	LV Gram/Echo
Smoking Cessation Advice	MET	Current Smoker
Cardiac Rehab Referral	MET	CR Phase 1



EMS – Ryan McDonald, Kevin Schoen | ED – Dr. Cauchi, Peggy Smith, Josh Ward | CCL = Dr. Kardesch, Rob Richardson, Joel Thompson, Breanna Ledford | Social Services = Sarah Lake | ICU = (Admit) Sonya Hiller, (D/C) Jessica Rice | CR – Anne Bristow

STEMI Case Report – H1123954

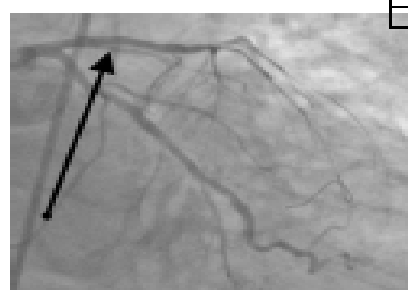
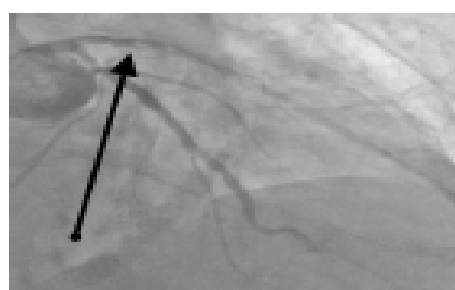
12/8/17

Patient	911	FMC 2ECG	Scene Time	CMH Arrival	D2MID	D2ECG	D2Actv	ED DIDO	CCL Time	D2B	FMC2B	Dr.	Quality Measures
82 y/o	23:37	12 min	18 min	1:00	4 min	-52 min	-36 min	10 min	22 min	32 min	96 min	Best	100%
M	CMH EMS	Goal <10 min, but no C/D/CP	Goal <20 min		Goal <10 min		Goal PRE-ACTV	Goal <30 min		Goal <90	Goal <120	Sadler, P	ACC Recommendations Met

Narrative	Chief Complaint	Diagnosis	Outcome
911 called by son after patient fell and hit head at home in El Dorado Springs. Upon EMS interview, patient short of breath and vomiting/nauseated. Patient disclosed "throat pain & funny feeling in chest," but no chest pain complaints. EMS ECG revealed acute onset RBBB, STEMI. ECG transmission performed & STEMI pre-activation performed per protocol.	Fall, shortness of breath, nausea/vomiting, "funny feeling in chest"	Anteroseptal STEMI with cardiogenic shock	100% prox-LAD → DES, EF = 20%. Hypotensive, IVF, dopamine & levophed gtt → Once weaned, echo revealed EF remained 20%. Discharged to SNF four days later.



Quality Cardiac Care Recommendations		
ASA within 24 Hrs of Arrival	MET	324mg by EMS
ASA @ D/C	MET	81 mg
Antiplatelet @ D/C	MET	Plavix
Beta Blocker @ D/C	N/A	C/I due to Hypotension
Statin @ D/C	MET	Atorvastatin 40mg
ACE-I / ARB for LVSD @ D/C	N/A	C/I due to Hypotension & Renal Insufficiency
LV Evaluation @ D/C	MET	LV Gram & Echo, EF = 20%
Smoking Cessation Advice	MET	SC Consult, Pt Declined
Cardiac Rehab Referral	MET	Phase I Ordered



EMS – Morgan Young, John Wright | ED – Dr. P. Sadler, Peggy Smith, Matthew Pulley | CCL = Dr. Best, Rob Richardson, Bryan Inman, Jason Hopkins | Social Services = Sarah Lake | ICU = (Admit) Oana Opris, (D/C) Ashton Bresswitz | CR = Anne Bristow

Citizens Memorial Hospital EMT and Paramedic Refresher

2017 National Continued Competency Program

Day 1 (1/13/18)			
Start Time	Duration	Course Name	Instructor(s)
8:00	1 hr	BLS Airway, Respiration, & Ventilation - Ventilation	TBA
9:00	0.5 hr	BLS Airway, Respiration, & Ventilation - Oxygenation	TBA
9:30	0.5 hr	BLS Cardiovascular - Post-Resuscitation Care	TBA
10:00	0.5 hr	BLS Cardiovascular - Ventricular Assist Devices	TBA
10:30	1 hr	BLS Cardiovascular - Stroke	TBA
11:30	1 hr	Lunch on your own	
12:30	2 hr	BLS Cardiovascular - Cardiac Arrest	TBA
14:30	2 hr	BLS Cardiovascular - Pediatric Cardiac Arrest	TBA
Day 2 (1/14/18)			
Start Time	Duration	Course Name	Instructor(s)
8:00	0.5 hr	BLS Trauma - Triage	TBA
8:30	0.5 hr	BLS Trauma - CNS Injury	TBA
9:00	0.5 hr	BLS Trauma - Hemorrhage Control	TBA
9:30	1.5 hr	BLS Medical - Special Healthcare Needs	TBA
11:00	0.5 hr	BLS Medical - OB Emergencies	TBA
11:30	0.5 hr	BLS Medical - Infectious Disease	TBA
12:00	1 hr	Lunch on your own	
13:00	0.5 hr	BLS Medical - Pain Management	TBA
13:30	0.5 hr	BLS Medical - Psychiatric and Behavioral Emergencies	TBA
14:00	0.5 hr	BLS Medical - Toxicological Emergencies - Opioids	TBA
14:30	0.5 hr	BLS Medical - Neurological Emergencies - Seizures	TBA
15:00	1 hr	BLS Medical - Endocrine Emergencies - Diabetes	TBA
16:00	0.5 hr	BLS Medical - Immunological Emergencies - Anaphylaxis	TBA
Day 3 (1/20/18)			
Start Time	Duration	Course Name	Instructor(s)
8:00	0.5 hr	BLS Operations - At Risk Populations	TBA
8:30	0.5 hr	BLS Operations - Ambulance Safety	TBA
9:00	0.5 hr	BLS Operations - Field Triage - Disasters / MCIs	TBA
9:30	0.5 hr	BLS Operations - Hygiene, Safety, and Vaccinations	TBA
10:00	0.5 hr	BLS Operations - EMS Culture of Safety	TBA
10:30	0.5 hr	BLS Operations - Pediatric Transport	TBA
11:00	1 hr	BLS Operations - Crew Resource Management	TBA
12:00	0.5 hr	BLS Operations - EMS Research	TBA
12:30	0.5 hr	BLS Operations - Evidence Based Guidelines	TBA

All courses require completion of a registration application. The link is at the bottom of this announcement.

Application deadline is two weeks prior to the start date of the course.

All course locations are CMH EMS Headquarters (1525 N Oakland, Bolivar, MO) unless otherwise specified.



For more information: theron.becker@citizensmemorial.com
To register: www.ozarksems.com/education-application.php



Citizens Memorial Hospital Paramedic Refresher

2017 National Continued Competency Program

Day 4 (1/21/18)		Paramedic Refresher	
Start Time	Duration	Course Name	Instructor(s)
8:00	1 hr	ALS Airway, Respiration, & Ventilation - Ventilation	TBA
9:00	1 hr	ALS Airway, Respiration, & Ventilation - Capnography	TBA
10:00	0.5 hr	ALS Cardiovascular - Stroke	TBA
10:30	0.5 hr	ALS Cardiovascular - Pediatric Cardiac Arrest	TBA
11:00	0.5 hr	ALS Cardiovascular - Congestive Heart Failure	TBA
11:30	1 hr	Lunch on your own	
12:30	1 hr	ALS Cardiovascular - Acute Coronary Syndrome	TBA
13:30	0.5 hr	ALS Trauma - Triage	TBA
14:00	0.5 hr	ALS Trauma - CNS Injury	TBA
14:30	0.5 hr	ALS Trauma - Fluid Resuscitation	TBA
15:00	0.5 hr	ALS Medical - Special Healthcare Needs	TBA
15:30	1 hr	ALS Medical - Medication Delivery	TBA
Day 5 (1/27/18)		Paramedic Refresher	
Start Time	Duration	Course Name	Instructor(s)
8:00	0.5 hr	ALS Medical - Pain Management	TBA
8:30	0.5 hr	ALS Medical - Psychiatric and Behavioral Emergencies	TBA
9:00	0.5 hr	ALS Operations - At Risk Populations	TBA
10:00	0.5 hr	ALS Operations - Field Triage - Disasters / MCIs	TBA
10:30	0.5 hr	ALS Operations - EMS Research	TBA

All courses require completion of a registration application. The link is at the bottom of this announcement.

Application deadline is two weeks prior to the start date of the course.

All course locations are CMH EMS Headquarters (1525 N Oakland, Bolivar, MO) unless otherwise specified.













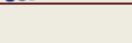





For more information: theron.becker@citizensmemorial.com
To register: www.ezarksems.com/education-application.php



EMS EDUCATION

Spring Semester 2018

Date(s)	Times	Course Name		Instructor(s)
Jan 11	7a-8a	CMH EMS Education Advisory Board Meeting		Theron Becker
Jan 13, 14, & 20	8a-5p	EMT Refresher Class (NREMT National Continued Competency Program Model)		Theron Becker, et al.
Jan 13, 14, 20, 21, 27, & 28	8a-5p	Paramedic Refresher Class (NREMT National Continued Competency Program Model)		Theron Becker, et al.
Feb 1	1p-5p	Paramedic Academy - Creating Academic Success and Applied Research for EMS		Theron Becker
Feb 3 & 4	8a-5p	Tactical Emergency Casualty Care (TECC)		Jason Stroud
Feb 6	9a-5p	Paramedic Academy - EMS Systems		TBA
Feb 8	1p-5p	Paramedic Academy - Workforce Safety and Wellness		Brice Flynn
Feb 13 & 15	9a-5p 1p-5p	Paramedic Academy - Public Health		Theron Becker Wanita Lister
Feb 20	9a-5p	Paramedic Academy - Medical Legal and Ethical Issues		?Jeff Anderson?
Feb 22	1p-5p	Paramedic Academy - Communications		Theron Becker
Feb 24	8a-5p	Tactical Combat Casualty Care - All Combatants (TCCC-AC)		Jason Stroud
Feb 25	8a-5p	Tactical Combat Casualty Care - All Combatants (TCCC-AC)		Jason Stroud
Feb 27 & Mar 1	9a-5p 1p-5p	Paramedic Academy - Documentation		?Jeff Anderson?
Mar 5	9a-1p	Competencies (Stroke Assessment and tPA Transfers)		Polk FTOs
Mar 5	3p-7p	Competencies (Stroke Assessment and tPA Transfers)		Polk FTOs
Mar 6	9a-5p	Paramedic Academy - Anatomy and Physiology		TBA
Mar 8	1p-5p	Paramedic Academy - Medical Terminology		TBA
Mar 8	6p-10p	Competencies (Stroke Assessment and tPA Transfers) at Eldorado Ambulance Station		Polk FTOs
Mar 10 & 11	8a-5p	PreHospital Trauma Life Support (PHTLS)		Jason Stroud
Mar 12	9a-1p	Competencies (Stroke Assessment and tPA Transfers) at Osceola Ambulance Station		Polk FTOs
Mar 13	9a-5p	Paramedic Academy - Pathophysiology		TBA
Mar 15	1p-5p	Paramedic Academy - Life Span Development		TBA
Mar 20	9a-5p	Paramedic Academy - Patient Assessment		TBA
Mar 21	9a-1p	Competencies (Stroke Assessment and tPA Transfers) at Hermitage Ambulance Station		Polk FTOs
Mar 22	1p-5p	Paramedic Academy - Critical Thinking and Decision Making		TBA
Mar 24	9a-1p	Competencies (Stroke Assessment and tPA Transfers)		Polk FTOs
Mar 24	3p-7p	Competencies (Stroke Assessment and tPA Transfers)		Polk FTOs
Mar 27 & 29	9a-5p 1p-5p	Paramedic Academy - Pharmacology		TBA
Apr 3	9a-5p	Paramedic Academy - Medication Administration		TBA
Apr 4	9a-10a	Clinical Educator Meeting		Theron Becker
Apr 5	1p-5p	Paramedic Academy - Port Access		Cassie Ahlers
Apr 10, 12, 17, & 19	9a-5p 1p-5p 9a-5p	Paramedic Academy - Airway Management and Ventilation		Neal Taylor
Apr 24	9a-5p	Paramedic Academy - Practical Exams		Theron Becker
Apr 26	1p-5p	Paramedic Academy - FIDAP Airway Unit Exam		Theron Becker
Apr 28	8a-12p	Traffic Incident Management (TIMS)		Brice Flynn
Apr 28 & 29	8a-5p	Emergency Vehicle Operator Safety (EVOS)		Theron Becker

All courses require completion of a registration application. The link is at the bottom of this announcement.

Application deadline is two weeks prior to the start date of the course.

All course locations are CMH EMS Headquarters (1525 N Oakland, Bolivar, MO) unless otherwise specified.



For more information: theron.becker@citizensmemorial.com
To register: www.ozarksems.com/education-application.php

