



# CMH Prehospital Newsletter

March 2019

## Competencies for this Quarter

### Trauma & MCIs

Polk County

March 5th 9a-1300 and 1800-2200

March 12th 0900-1300

March 1500-1700

Cedar County

March 14th 1800-2200

### In this Issue

Neal's Thoughts (2)~Polk County Updates (3)~St Clair County News (4)~Great Stockton Lake (5-6)~Education (7-8)~STEMI Times (10-11)~Safety Tips (12)~Employee Celebrations (13-15)

### CMH EMS Mission Statement

To provide safe, exceptional and compassionate care to our communities  
with an emphasis on highly trained and empowered EMS staff.

# Neal's Thoughts

In the last 2 weeks, I have had the opportunity to talk to 2 groups of high school student about careers in EMS. I found it to be very encouraging to listen to them and answer their questions. When speaking at a career day, it is exciting to see the faces of future providers light up with enthusiasm and excitement. You can only hope that you fuel this excitement and encourage that student to pursue a career in EMS. These moments are very inspiring for myself.

All of us are responsible for living CMH's Mission, Vision and Values as well as our departments mission statement:

**To provide safe, exceptional and compassionate care to our communities with an emphasis on highly trained and empowered EMS staff.**

We accomplish our mission. Our product is patient care, which we provide in an excellent, professional manner. However, we all need to continue to work together as a team and encourage one another to become stronger and better, for the sake of our communities.

We continue to be an asset to our service area, which currently covers 2,265 square miles spread throughout 4 counties with an overall population of about 64,000 people. Our current population density is 241 people per square mile. To give you an idea, Santa Fe NM., Round Rock Tx., and St.

Charles Mo all have populations close to 64,000, however, their population density is anywhere from 1,650 to 2,962 people per square mile.

We do face a large challenge working in such rural areas. Currently, we work with limited resources in addition to long response times and transport times. However, with long patient transport times, we sometimes get to work all the way though a protocol. This is not something you get to do very often working in an urban setting.

I am not trying to sugar coat it, we work in a rural system with 1 full time fire department in our service area. We depend on volunteer fire and rescue departments. Tax base to support emergency services is very low or non-existent. This is a tough challenge, so we need to do the best within our means to be appreciative, support and encourage the volunteer departments in our area.

I do appreciate all you do and am very proud of our department. Thank you.

On a side note spring is on the way. I saw a buzzard today. The buzzards are moving north, which is a indication of warmer weather.

Take it easy and be safe,

Neal T.

# Polk County Updates

If you missed the staff meeting here are the bullet points:

I have noticed lately the following items;

- \* Working issues out with each other
- \* Constantly cleaning the garage floor from dirt and debris
- \* Communication
- \* When you see a problem, you fix it

Page 167 of the protocol book gives us guidance on what we keep and what must get rid of when supplies expire.

The following is a list of what **MUST GO** when expired

- \* Medications
- \* Electrodes and combo pads
- \* Hemostatic gauze
- \* Irrigation fluid—sterile water and normal saline
- \* KY jelly

I do appreciate everyone getting in there and checking their trucks for expired supplies, but I am hopeful that this list will help cut down the cost of waste and keep items in rotation longer that are not used as often.

Allison Young has accepted the P shift on B week.

**HealthStreams;** I will sound like a broken record with this topic, but **I need 100% completion EVERY MONTH.**

The other counties have 100% completion, **GREAT JOB!!!** Did you know that if we **meet goal we get a 1% of our yearly income for a bonus??** Oh...and it is also part of your employment requirements here at CMH. **DO YOUR HEALTHSTREAMS!!** I have offered for people to come in and do their HealthStreams, I will pay you or if you are at home I will pay for what you have done! Bottom line, **DO YOUR HEALTHSTREAMS**

For the most part, we are doing a great job on exporting charts. Keep up the great work!! If you are not able to export your chart, please utilize the note section when

saving the chart if you are unable to talk to a manager or Jeff as to why the chart has not been exported.

I really appreciate the strong work everyone does. I have really enjoyed observing everyone interact with the paramedic students that are doing riding times. I am very proud of everyone's willingness to help and teach!

Aaron Weaver, Paramedic

Operations Manager Polk County

CMH EMS



# St. Clair County Newsletter

Recently a good friend of mine became a published author, Lloyd Divine was my first partner when I worked for Cox EMS, a paramedic now, Lloyd is an extraordinary man and one of few over the years I can call friend first and colleague second. Lloyd's book entitled "On the Back of a Turtle" has been 20 years in the making and outlines the history of his Wyandot heritage. As I am writing this I have only started getting into the book and already have been intrigued by the history. I would like to insert a small part of the original narrative "*In the Sky-world it can be said there was nothing good and there was nothing bad. Every citizen was equally respectful of all citizens and willfully cared for the needs of their fellow citizens. There were laws and there was order, yet there was no need for the laws to be spoken, as they were written on the hearts of every citizen and everyone just enjoyed life.*" (2) A lot happened in the narrative after this but we will focus on this. Wouldn't it be wonderful not only in everyday life but in the life of EMS, that everyone came to work and was more focused on the needs and success of others without regard to themselves? Policy and rules would collect dust because everyone was empowered to do what is right.

At CMH we continuously recite our core values, **Positive, Respectful, Innovative, Dedicated** and **Empowered**. I couldn't help but be reminded of these core values while I was reading this book. Thinking that if everyone truly had and worked in regards to these values how easy our jobs would be. It seems all too often we get caught up in the Me Me Me of life and forget that true success comes by helping others reach their success. Regardless of being an individual, group or organizational task, we only succeed if we all succeed.

Call volume has been picking up, patially due to all the inclement weather lately, MVC's and folks not able to get themselves to medical care due to roads and weather. So, far to my knowledge, there has only been a couple of incidents involving our units, always be mindful of road and weather conditions, **if we don't get there safely, we cannot help anyone!**

**Bi-Monthly staff meeting** coming up for Osceola on **3/14/2019**, if you are in the area stop in, we would like to have anyone who can attend even if it is not your home county.

**Just a reminder for everyone to stay on top of Healthstreams and try to register early to get you HazMat out of the way for the year.** I have registration forms printed off at the office.

I think we have finally adjusted to all the template changes on Expanse, it has been fun to say the least.

John Frazer

Paramedic

St Clair County Operations Manager

Divine, Lloyd., '*On the Back of a Turtle*' (2019)

*Integrity is doing the right thing even when no one is watching., C.S. Lewis*

Christian County Ambulance  
Is hosting a **FREE Cardiac Class** on March 28 and 29. Lloyd is organizing this class, Dave Hoover and Andrea Applegate are both guest speakers!! Please sign up for the amazing learning opportunity **ASAP.**

# Welcome From the Great Stockton Lake

As another month has come and gone, we are still trying to remember to write 2019 and not 2018. Ha Ha! We are thinking: "What does 2019 have in store for me and you?" "What type of calls can we expect during 2019?" We are already seeing the stomach virus's in schools, nursing homes, friends & family and maybe ourselves (Oh, lucky us!) Just remember to WASH, WASH, WASH your hands, and keep those gloves on! This bug can hang around on people's skin, bedding, clothing, just to name a few, and it spreads like wild fire. The other types of calls we are seeing an increase in Cedar County are respiratory (Asthma) in kids and adults calls.

## *What is asthma and what can I do for a patient with it?*

Intermittent functional lower airway obstruction and frequent symptom exacerbations. The disease causes constriction of the bronchial tree and small airway inflammatory changes that prevents full exhalation.

Asthma affects all ages but most often begins during childhood and is more prevalent in females. Most children under the age of 18 with respiratory issues have been diagnosed with asthma at some point in their lifetime.

Common triggers for an asthma attack may include irritants such as aerosol sprays, perfumes, and **smoke**. In addition, allergens such as animal dander, mold, mildew, and pollens can trigger an attack. Environmental and physical conditions such as weather changes, emotional events, and viral infections can also promote asthma symptom exacerbations.

The classic findings in patients with an asthma exacerbation are diffuse expiratory wheezing, a prolonged expiratory phase and an increased respiratory rate.

However, other signs that may be noticed in pediatric patients include intercostal retractions and nasal flaring. In severe cases, exam of the lungs may show a "quiet" chest, resulting from such profound constriction of the bronchial tree that the wheezing sound cannot be produced. The key to the pediatric lung exam is to not only listen to the lungs, but look at the chest wall and work of breathing.

Treatment includes the use of short-acting bronchodilators such as Albuterol and/or Ipratropium which offers the patient a more sustained period of adequate air exchange. Young children often resist a mask or any type of equipment near their face, therefore, keeping the child calm with distraction from a toy and allowing the parent to hold the child can make our assessments and treatment easier. In other words, if you keep them happy and distracted it will be much easier to put the mask near their face. Creativity is the key!

Continuous nebulization of bronchodilator medication is often utilized. Intubation of these patients should be avoided at all costs unless signs of impending respiratory failure are present. These signs include inability to speak, decreased mental status, and worsening fatigue.

The goals for treating asthma exacerbations include correction of hypoxemia and increased airflow. Interventions include the administration of oxygen (O<sub>2</sub>) to keep O<sub>2</sub> saturations greater than or equal to 94%, administration of Albuterol, Ipratropium or Xopenex by nebulizer along with oral administration of corticosteroids for mild to moderate management of acute asthma.

# Welcome From the Great Stockton Lake (continue)

## From the Board:

Not much happened this month's meeting, they did vote to have the Stryker load system installed in Stockton, instead of having it taken to Columbia. And they did Ok the purchase of 4 new pulse ox units.

**THANK YOU!** I want to personally thank those that came in, as well as those that tried, during the Major Snow Storm we almost got in January! Great Job to the crews that ran call after call or were stuck in the snow, on snowy roadways and still managed to respond. Also, thanks to those who stayed over to cover the next shift due to their relief not being able to make it in. ok just kidding, but really Thanks for all those that came in and helped when we were planning for this major event, just thank God it didn't happen.

Thanks again Tom Ryan Ops Mgr Cedar County.



First CPR Class held at the new Stockton Station working with Cedar County Sheriff, Dispatch and CMHE Employees. The class was taught Royce Ann Andra, RN and Lyman Taylor by Monday, February 25th by

# The FTO Corner

The first Field Training and Evaluation Program (FTEP), was held February 8, 2019. The group of adopted several great inputs and they will be implemented for the On-Boarding/New Hire. During class, it was clear that the plan I had chosen for the documentation was not going to work as well as I thought. So, we searched for a better solution, and came up with a software package that will benefit both the FTO program, plus the current and future Paramedic and EMT classes, while still meeting the accreditation requirements. Stay tuned for the updated class dates, as I'll be rolling those out once we have the software up and running.

**New Hire/On-Boarding process.** With a new software package coming on board, and the changes I mentioned above, the process will be much easier to document and track. The process will have two tracks, a normal 90-Day and a shortened 45-Day track for full-time, experienced new hires.

**Competencies:** March is competency month, so don't forget to look at the Spring Education schedule for dates and times. The topic is Trauma and MCI, thanks to Brice and Aaron for the topic and kicking us off for the year. These are mandatory requirements, so pick a date and attend.

*(Remember, if you are a certified EMSEducator, teaching competencies solves two vital functions, CEU's for the topic taught, plus CEU's for your Educator status. I encourage ALL of our EMS Educators, FTO or not to get involved in the process).*

**HealthStreams:** There will be a forthcoming HealthStream Roll-Out of the new equipment add-on by the Equipment Committee. The Roll-Out will consist of information on the ARS Decompression Needle, the HyFin Chest Seal, Decadron, and the variable adapter for CPAP.

Thanks!

Mike Minter, MsEd, Paramedic, V/C

CMH-EMS/Cedar County

*"Train Like You Plan to Treat"*



## 17<sup>th</sup> Annual Dr. Tom Steele Emergency Care Symposium

Friday, April 26, 2019

Physicians: \$100.00

All Others: \$75.00

**Register:** [www.OnlineRegistrationCenter.com/TomSteele](http://www.OnlineRegistrationCenter.com/TomSteele)

Registration fee includes access to syllabus materials, electronic certificate of attendance, breakfast, lunch and refreshment breaks.

This year's symposium again will have a broad range of topics important to all facets of emergency care presented by speakers who are experts in their fields. Emergency Services personnel, including pre-hospital, nurses, respiratory therapists, advanced practitioners and physicians will gain valuable information to help define appropriate care and minimize the risk of preventable complications and death. Speakers include Dr. Jeff Jarvis, Dr. Evan Schwarz, Dr. Erik Osborn, Ashley Liebig, RN, and Mercy's own Dr. Jennifer Cooper-Lewis.

**Please bring a cell phone, tablet, laptop or other device that will connect to the internet to participate in evaluations for continuing education credits.**

Registration by Friday, April 12, 2019 is encouraged. A \$25 processing fee will be deducted from all cancellation requests made before Friday, April 12, 2019. No refunds will be made thereafter. If Mercy cancels the symposium a full refund will be issued. The liability of Mercy is limited to the symposium fee. Mercy will not be responsible for any losses incurred by registrants including, but not limited to, airline cancellation charges or hotel deposits. Layered clothing is recommended to allow for room temperature variations. For additional information, please contact Mercy Talent Development and Optimization at (417) 820-3005 or [SPRG\\_TDO@Mercy.net](mailto:SPRG_TDO@Mercy.net).

Mercy Hammons Heart Institute • 1325 E. Cherokee • Springfield, Missouri

Moderated WebEx Available in Fort Smith

Networking  
Opportunities!!

**PETERSON OUTDOORS MINISTRIES**

**FIRST RESPONDERS**

**2<sup>ND</sup> ANNUAL APPRECIATION TRAIL SHOOT EVENT**

**EVENT INCLUDES**

SHOTGUN KNOCKOUT • 3D ARCHERY • KNIFE/TOMAHAWK THROWING • ATLATL  
SLINGSHOT BOW • SLINGSHOT • BLACK POWDER SHOOTING • PISTOL SHOOTING  
LONG RANGE RIFLE SHOOTING • CROSSBOW

**SATURDAY MARCH 30, 10:00 A.M. Free Lunch at Noon**

All of us at PETERSON OUTDOORS MINISTRIES/LODGE OF HOPE would like to express our admiration and gratitude to the brave men and women in our community who selflessly run towards danger to save and protect others! If you are one of these heroes, we invite you to join us in a day of fellowship and fun.

**Location: LODGE OF HOPE** Bellamy, Missouri Directions: Taking Bellamy exit #91 off of Highway 71 also known as Highway 49 go East on DD 7.1 miles.

For additional info and interactive map go to <https://petersonoutdoors.org/> or contact: Stephen Jennings: 417-680-4386 [sjennings@schubermitchell.com](mailto:sjennings@schubermitchell.com)

**THANK YOU FOR YOUR SERVICE!!**

## 17<sup>th</sup> Annual Dr. Tom Steele Emergency Care Symposium

Friday, April 26, 2019

### Agenda

- 7:00 A.M. – 7:30 A.M. Registration & Continental Breakfast
- 7:30 A.M. – 7:40 A.M. Welcome & Announcements  
Ted A. McMurry, MD, FACEP  
Mercy Hospital Springfield
- 7:40 A.M. – 8:40 A.M. Feedback: the other F word  
Ashley Liebig, RN, BSN, CCRN  
Travis County STAR Flight
- 8:40 A.M. – 9:40 A.M. Preventing Peri-intubation Hypoxia  
and Update on EMS Upper Airway  
Dr. Jeff Jarvis, MD, MS, EMT-P  
Baylor Scott & White Hospital
- 9:40 A.M. – 10:00 A.M. Break & Exhibits
- 10:00 A.M. – 11:00 A.M. Pediatric Pearls and Pitfalls  
Dr. Jennifer Cooper-Lewis, MD  
Mercy Hospital Springfield
- 11:00 A.M. – 12:00 P.M. Human Performance in Resuscitation  
Ashley Liebig, RN, BSN, CCRN
- 12:00 P.M. – 12:30 P.M. Lunch & Exhibits
- 12:30 P.M. – 1:30 P.M. S% & I Found in a CI@^ Ton of Data  
Dr. Jeff Jarvis, MD, MS, EMT-P
- 1:30 P.M. – 2:30 P.M. Extreme ECMO: Combat, Trauma,  
and Transport  
Dr. Erik Osborn, MD  
Inova Fairfax Hospital
- 2:30 P.M. – 2:45 P.M. Break & Exhibits
- 2:45 P.M. – 3:15 P.M. Extracorporeal CPR is Coming  
Dr. Erik Osborn, MD
- 3:15 P.M. – 4:15 P.M. Opioid Crisis  
Dr. Evan Schwarz, MD  
Washington University in St. Louis
- 4:15 P.M. – 4:45 P.M. Suboxone  
Dr. Evan Schwarz, MD
- 4:45 P.M. – 5:00 P.M. Closing Remarks, Evaluation &  
Adjournment  
Ted A. McMurry, MD, FACEP  
Mercy Hospital Springfield

### Educational Credits

#### Physicians

Mercy Hospital Springfield designates this Live Activity for a maximum of 8.0 AMA PRA Category 1 Credits™. Physicians should claim only credit commensurate with the extent of their participation in the activity. Mercy Hospital Springfield is accredited by the Missouri State Medical Association to provide continuing medical education for physicians.

#### Nurses

Mercy Health Central is an approved provider of continuing nursing education by the Midwest Multistate Division, an accredited approver by the American Nurses Credentialing Center's Commission on Accreditation. This activity provides 8 contact hours of continuing nursing education. To receive a Certificate of Attendance and Successful Completion for this educational activity, the participant must attend 90% of the scheduled program and complete all program requirements.

#### Respiratory Therapists

Application has been made to the American Association for Respiratory Care (AARC) for continuing respiratory education credits.

#### Emergency Medical Services Providers

Mercy EMS is happy to provide Missouri State CEUs for this educational opportunity. Successful completion of this activity provides 8 hours of Trauma core CEUs. To receive a Certificate of Attendance for this educational activity, the participant must attend 90% of the scheduled program and complete all program requirements. Mercy EMS is an accredited provider of continuing education for the State of Missouri, #07701P.

### Certificate Distribution

Mercy Co-Workers: Certificates will be uploaded to your MyEducation transcript within 3 weeks of the activity. You may print a certificate by clicking on the course name on your MyEducation transcript.

Non-Mercy Participants: Certificates will be emailed to the address you provided when you registered within 3 weeks of the activity.

Mercy Hammons Heart Institute • 1325 E. Cherokee • Springfield, Missouri

Mercy

# Education Opportunities

## Hazmat

March 18 10 or 1300

March 28 0830 or 1300

ER Ambulance Bay

## Give Blood!!!

March 7th 1300-1800

Community Room

## PALS

Initial class;

March 21 and 22

Refresher;

March 5th

## ACLS

Initial Class;

March 23 and 24

Refresher;

March 14 and 29

## Tucker Redfern Pediatric Trauma Symposium

Friday March 29th at Mercy Hammons Heart Institute

Non-Mercy Providers \$50

Register online

<https://www.onlineregistrationcenter.com/Tucker2019>

# Door to Cath Lab Times!!

Great Job Steve & Kellie!!

Report – H3058514

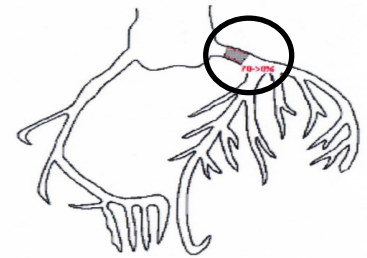
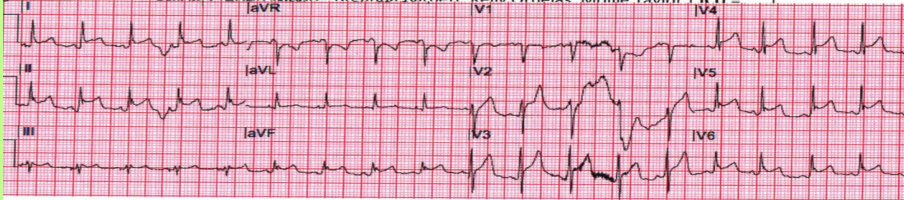
12/10/18

		Referring Arrival	D2 Dispatch	Dispatch to Arrival	Referring DIDO	CMH Arrival	D2Actv	ED DIDO	CCL Time	D2B	FMC2B	Dr.	Quality Measures
77 y/o	3 days prior	11:42	28 min	38 min	82 min	13:35	-23 min	7 min	30 min	37 min	150 min	Moore	100%
M	Osceola	St. Clair Clinic	Goal <15 min		Goal <30 min		Goal PRE-Actv	Goal <30 min	Goal <20 min	Goal <60	Goal <90	Carter	ACC Guidelines Met

Narrative	Chief Complaint	Diagnosis	Outcome
<ul style="list-style-type: none"> <li>Patient sought care at St. Clair County Public Health Clinic for symptom onset 3 days prior</li> <li>STEMI pre-activation performed</li> </ul>	<ul style="list-style-type: none"> <li>Chest pain radiating into neck</li> </ul>	STEMI	<ul style="list-style-type: none"> <li>PCI</li> <li>Transferred to Cox for pericardial effusion; discharged home 12/19 in stable condition.</li> </ul>

Quality Cardiac Care Recommendations			
ASA within 24 Hrs of Arrival	MET	324mg by Clinic	
D2B < 90 min	MET	37 min	
Antiplatelet Post-PCI	MET	Plavix 600mg by CCL	

Clinic – Dr. Shoemaker | EMS – Kellie Burns, Steven Keller | ED – Dr. Carter, Shawna Miller, Summer Hendrickson | CCL – Dr. Moore, Breanna Barnett, Kelly Ornelas, Mollie Taylor | ICU =



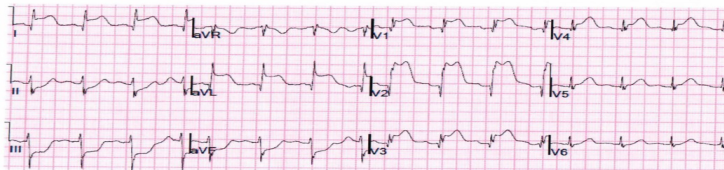
Great Job Tom & Lyman!!

STEMI Case Report – H3097706

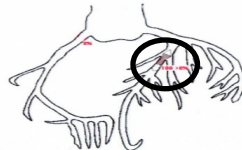
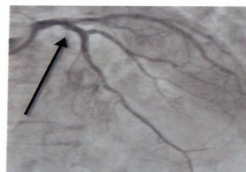
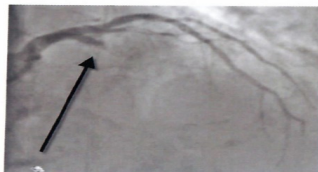
12/27/18

Patient	Symptom Onset	911	FMC 2ECG	Scene Time	CMH Arrival	D2ECG	ECG 2Actv	D2MD	Act2 CCL	CCL Time	ECG2B	Dr.	Quality Measures
84 y/o	19:00	20:59	2 min	14 min	21:58	6 min	5 min	6 min	14 min	18 min	37 min	Best	100%
F	Stockton	CMH EMS	Goal <10 min	Goal <20 min		Goal <10 min	Goal <11 min	Goal <10 min	Goal <30 min	Goal <20 min	Goal <60	Carter	ACC Guidelines Met

Narrative	Chief Complaint	Diagnosis	Outcome
<ul style="list-style-type: none"> <li>Patient called 911 2 hours after symptom onset</li> <li>CP intermittent, EMS &amp; initial ED ECG negative</li> <li>CP increased in ED, repeat ECG revealed STEMI</li> <li>STEMI activation performed per protocol</li> </ul>	<ul style="list-style-type: none"> <li>Acute onset of chest pain at rest associated with vomiting</li> </ul>	Anterior STEMI	<ul style="list-style-type: none"> <li>PCI</li> <li>EF = 35%. Discharged home two days later.</li> </ul>



Quality Cardiac Care Recommendations			
ASA within 24 Hrs of Arrival	MET	324mg by ED	
ECG2B < 90 min	MET	37 min	
Antiplatelet Post-PCI	MET	Plavix 600mg by CCL	
ASA @ D/C	MET	81 mg ASA	
Antiplatelet @ D/C	MET	Plavix	
Beta Blocker @ D/C	ME	Metoprolol	
Statin @ D/C	ME	Atorvastatin 80mg	
ACE-I / ARB for LVSD @ D/C	ME	EF = 35%, Lisinopril	
LV Evaluation @ D/C	ME	LV Gram & Echo	
Smoking Cessation Advice	N/A	Never Smoker	
Cardiac Rehab Referral	ME	Phase I	



EMS – Thomas Ryan, Lyman Taylor | ED – Dr. Carter, Peggy Smith, Josh Ward, April Edgar | CCL = Dr. Best, Mollie Taylor, Rob Richardson, Bryan Inman, Joel Thompson | ICU = (Admit) Megan Dunn, (D/C) Leigha Pellegren | SS = Sarah Lake | Echo = Ryan Matzen | CR = Karma Murr | Discharge = Dr. Katrapati

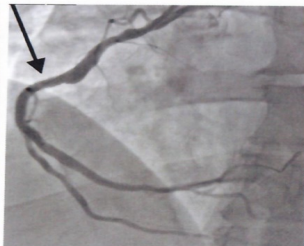
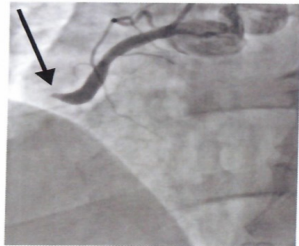
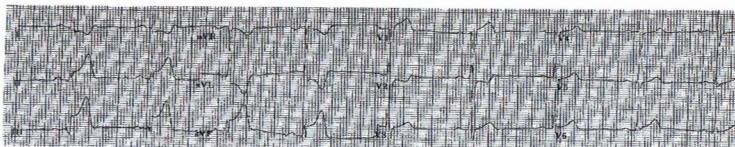
Strong work Morgan  
& John!!

## STEMI Case Report – H3150739

1/22/19

Patient	Symptom Onset	Referring Arrival	FMC 2ECG	D2 Dispatch	Referring DIDO	CMH Arrival	D2Actv	ED DIDO	CCL Time	D2B	FMC2B	Dr.	Quality Measures
39 y/o	8:00	12:25	1 min	16 min	27 min	13:36	-39 min	2 min	12 min	14 min	85 min	Best	100%
M	El Dorado Springs	CCMH CMH EMS	Goal <10 min	Goal <15 min	Goal <30 min		Goal PRE-Activ	Goal <30 min	Goal <20 min	Goal <60	Goal <90	Glover / Obermeyer	ACC Guidelines Met

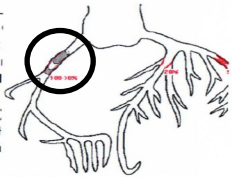
Narrative	Chief Complaint	Diagnosis	Outcome
<ul style="list-style-type: none"> <li>Patient sought care at Cedar Co Memorial Hospital after symptom onset that morning</li> <li>STEMI pre-activation performed</li> </ul>	<ul style="list-style-type: none"> <li>Acute onset of chest pain radiating into both arms</li> </ul>	<b>Inferior STEMI</b>	<ul style="list-style-type: none"> <li>PCI for 100% prox-RCA</li> <li>Discharged home two days later</li> </ul>



Quality Cardiac Care Recommendations		
ASA within 24 Hrs of Arrival	MET	324mg by CCMH
D2B < 90 min	MET	14 min
Antiplatelet Post-PCI	MET	Plavix 600mg by CCL
ASA @ D/C	MET	325 mg ASA
Antiplatelet @ D/C	MET	Plavix
Beta Blocker @ D/C	MET	Metoprolol
High-Dose Statin @ D/C	MET	Atorvastatin 80mg
ACE-I / ARB for LVSD @ D/C	N/A	Losartan
Aldosterone Antagonist if eligible	N/A	EF = 60%
LV Evaluation @ D/C	MET	LV Gram
Smoking Cessation Advice	MET	Current Smoker
Cardiac Rehab Referral	MET	Phase I

EMS  
Morgan Y.  
John R.

CCMH – Dr. John Wright  
Raines, Sumi Best, Bryan I Richardson,  
ICU = (Admit (D/C) Carrie I Stormy Grea  
Discharge =



# Brice's Safety Tips

Well, my third child is now with us! Miriam Eliza Flynn came into the world the day after Valentine's Day, thank goodness! We have adjusted well to having a third child in the family and house. My oldest, Isaac, has had the hardest time with her, because of all the attention she needs. Because of the needs of everyone in my home at this time I really want to say thank you to those that covered my shifts and Aaron for letting me be off and home with my family during this transition time. By the time this is on the paper, or screen in front of you I'll be back on shift.

So with March before us, so are the competencies, and Patient Safety Awareness week. Please come ready to learn, this will not be a boredom by PowerPoint competency.

March 10-16 is patient safety week. We will be highlighting some patient safety focus during that week.


"To provide *Safe* exceptional compassionate care..."

That's all for now. Thank you again to those that filled my shifts. It's has been a great time at home with Miriam and the rest of my family.

Brice



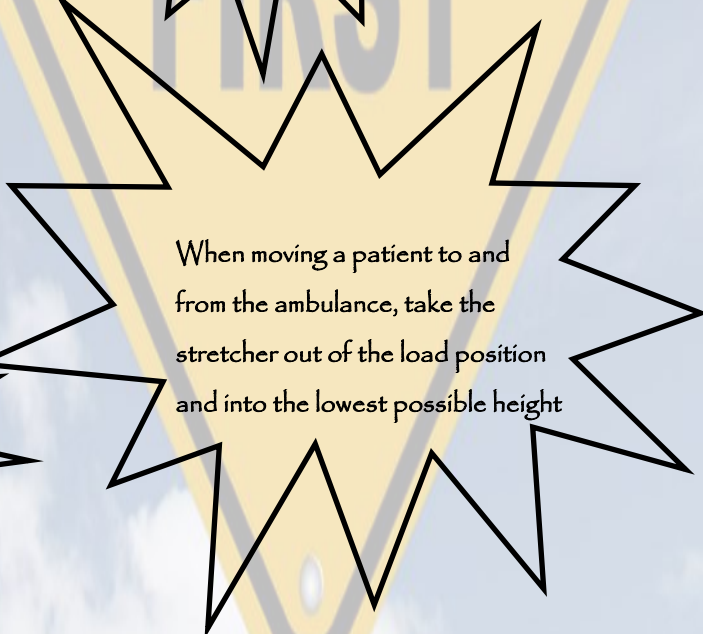
Check your 6 Rights when  
Administering medications!!



Communicating with your  
partner will prevent patient  
accidents!!



Use all safety belts on the  
stretcher per manufacture  
specifications



When moving a patient to and  
from the ambulance, take the  
stretcher out of the load position  
and into the lowest possible height

# Miriam Eliza Flynn



Please welcome into the world this beauty, Miriam Eliza Flynn. She made her entrance into the world on February 15th, 2019 at 12:24. Her daddy says she was 8 pounds, 14 ounces, and 22 inches long. Brice states that not only does she have a head full of beautiful dark hair, but double dimples!!

Congratulations Flynn Family!

# Celebrations

## Birthdays:

Cassandra Keller 7th

Tim Shaw 10th

Adam Stoddard 12th

Josiah Lentz 17th

Comorgan Jones 18th

Bobby O'Keefe 19th

Theron Becker 28th

Lucas Weaver 28th

## Anniversaries

Aaron Weaver 23 years

Tom Liberty 23 years

Cassandra Keller 7 years

Eric Childress 5 years

Levi Crews 5 years

Emma McIntire 5 years

Zane Gore 3 years

Taylor McKlintic 1 year

Cody Moore 1 year

Happy Birthday and Happy Anniversary to all!! Special Thank you for all of that you contribute to making CMH EMS an amazing place to work!!

# Employee Announcements!



Congratulations to Lynzi Taylor (left) (daughter of Lyman Taylor) for her 3rd place area proficiency application in Food Service placement. Brooke has advanced to the state level with her proficiency application and will be competing against other FFA members from across the state in April at the MO State FFA Convention!



Neal participating in Stop The Bleed held at the Polk County Health Department Jan. 31st, 2019



Spring Forward Sunday March 10